

# **What Is Present Reality**

*The Power of Managing the Limits of Science*

**Vipin Gupta**

**Copyright © 2021 Vipin Gupta**  
**All rights reserved.**

All rights reserved by author. No part of this publication may be reproduced, stored in a retrieval system or transmitted in any form or by any means, electronic, mechanical, photocopying, recording or otherwise, without the prior permission of the author.

**ISBN: 9798-5921-0286-8**  
Black & White Paperback  
Independently Published Imprint

**ISBN: 9781-0879-3132-6**  
Color Hardcover  
Indy Pub Imprint

**First Published: 2021**

**Cover Design:**  
Ashaf Mohideen

**Illustrations:**  
Ghanshyam Bochgeri

**Illustration supervision:**  
Olivia Chatterjee Biswas

**Edited By:**  
Sayantani Sengupta, Sangeeta Chatterjee, and Prem Nath

**Page Setup:**  
Pinaki Dutta

**Editorial supervision:**  
Sanchaita Biswas, Anupriya Dutta, and Vishnu Vijayan

**Index:**  
Liya Jayabalan and Salini Kurup

**EBook Editor:**  
Suresh Velu

**Project Manager:**  
Pinaki Ghosh

# Contents

<b>Project Motivation</b> .....	<b>1</b>
<b>List of Abbreviations</b> .....	<b>6</b>
<b>List of Tables</b> .....	<b>7</b>
<b>About the Author</b> .....	<b>9</b>
<b>Preface</b> .....	<b>11</b>
<b>Chapter 1: Introduction—Understanding Present Reality</b> .....	<b>16</b>
1.1 The Scientific Approach to Present Reality .....	17
1.2 The Special Theory of Linear Relativity .....	22
1.3 The General Theory of Nonlinear Relativity .....	24
1.4 The Parabolic Theory of Chaotic Relativity.....	26
<b>Chapter 2: The Paradigm of the Present Reality</b> .....	<b>30</b>
2.1 The Paradigm of the Present Reality as the Limit of Theory, Ideal, and Hypothesis Formation .....	31
2.2 Three Types of Personal Experience.....	34
2.3 The Metaphysical Reality of the Becoming System .....	36
2.4 Classifying Natural Planning Paradigms.....	40
2.5 Three Primary Paradigms for Determining the Value of Organizational Planning.....	43
2.6 Seven Secondary Forms for Paradigmatically Activating the Value of Organizational Planning.....	48
2.7 Theory-Taking .....	50
2.8 Theory-Making.....	52
2.9 Theory-Shaping .....	55

2.10 The Ideal-Taker .....	58
2.11 The Ideal-Maker .....	61
2.12 The Ideal-Shaper .....	63
2.13 The Ideal-Equilibrator .....	65
<b>Chapter 3: The Paradigm-Free Future Reality .....</b>	<b>68</b>
3.1 Eight Tertiary Strategies for Paradigm-Free Organizational Development of Transformative Planning .....	70
3.2 The Purple Ocean Strategy.....	70
3.3 The Blue Ocean Strategy.....	72
3.4 The Yellow Ocean Strategy .....	73
3.5 The Red Ocean Strategy .....	74
3.6 The Indigo Ocean Strategy.....	76
3.7 The White Ocean Strategy .....	76
3.8 The Green Ocean Strategy.....	78
3.9 The Orange Ocean Strategy .....	80
<b>Chapter 4: The Past Reality of Varying Paradigms .....</b>	<b>84</b>
4.1 Objective for Planning the Present Paradigm: Organizational Development .....	87
4.2 Objective for Planning the New Paradigm: Organization of Energy in the Universe.....	91
4.3 Objective for Planning the Primordial Paradigm: Organization of Energy.....	98
4.4 Objective for Planning the Primordial-Primordial Paradigm: Formative Energy, Without Organization .....	112
4.5 Objective for Planning the Param-Primordial Paradigm—Organization.....	132

4.6. Objective for Planning the Primeval-Primordial Paradigm—Ecosystem .....	140
4.7. Objective for Planning the Para-Primordial Paradigm—Entity ....	197
<b>Chapter 5: The Planning Reality of the Eventual Paradigm .....</b>	<b>208</b>
5.1 The Subject Planning the Supreme-Primordial Paradigm—God....	211
5.2 Six Paradigms for Becoming an Immortal Entity .....	212
<b>Chapter 6: The Primary Doctrines for Paradigmatic Planning.....</b>	<b>243</b>
6.1. Planning for the Subjectivity of the Supra-Primordial Paradigm: Primary Doctrines .....	244
6.2 First, “I am the Divine Truth Doctrine” ( <i>Brahma Satyam Jagan Mithya siddhanta</i> , -3 x 10 <sup>6</sup> ) .....	245
6.3 Second, “I am the Guider Fire Doctrine” ( <i>Tejasca Pranoham Asmi siddhanta</i> , -10 <sup>108</sup> ) .....	254
<b>Chapter 7: The Secondary Doctrines for Paradigmatic Planning .....</b>	<b>258</b>
7.1 Planning for the Subjectivity of the Supra-Primordial Paradigm: Secondary Doctrines .....	259
7.2 First, “I am the Sentient Water Doctrine” ( <i>Apanca Pranoham Asmi siddhanta</i> , 10).....	259
7.2.1 Five Primary Faces.....	260
7.2.1 Eleven Secondary Faces.....	262
7.2.3 Seven Tertiary Faces .....	264
7.2.4 Eleven Quaternary Faces.....	267
7.2.5 Twenty-One Quinary Faces .....	273
7.2.6 Formless Senary Entity.....	274
7.3 Second, “I am the Supernatural Air Doctrine” ( <i>Vayosca Pranoham Asmi siddhanta</i> , -10 <sup>10</sup> ).....	275

<b>Chapter 8: The Tertiary Doctrines for Paradigmatic Planning.....</b>	<b>277</b>
8.1 Planning for the Subjectivity of the Supra-Primordial Paradigm: Tertiary Doctrines .....	278
8.2. First, “I am the Natural Earth Doctrine” ( <i>Prithivya Pranoham Asmi siddhanta</i> , -10 <sup>8</sup> ) .....	279
8.3 Second, “I am the Satanic Ether Doctrine” ( <i>Akasasya Pranoham Asmi siddhanta</i> , -10 <sup>7</sup> ) .....	281
8.4 Twelve Quaternary Values of the Subjective Entity .....	283
8.5 Twelve Quinary Values of the Ecosystem as the Subject .....	287
8.6 Twelve Senary Values of the Subject as the Ecosystem .....	297
<b>Chapter 9: The Sequential Effects of the Paradigmatic Planning.....</b>	<b>317</b>
9.1 First, Methyl as the Origin of Life .....	319
9.2 Second, Nine Forms of the Ether Element That Sequence Life .....	321
9.3 Third, the Phage as the Primary Life Form.....	322
9.4 Fourth, the Archaeon as the Secondary Life Form .....	323
9.5 Fifth, the Bacterium as the Tertiary Life Form.....	325
9.6 Sixth, the Eukaryote as the Quaternary Life Form.....	326
9.7 Seventh, the Prokaryote as the Quinary Life Form.....	327
9.8 Eighth, the Spirit as the Senary Life Forming the Cell, Without the Satanic Energy .....	329
9.9 Ninth, the Param Child as the Spiritually Programmed Life, Within Each Cell .....	331
<b>Chapter 10: Consequences of the Paradigmatic Planning .....</b>	<b>340</b>
10.1 Self-Luminous Entity Profiting from the Spirit-Free Performing	342
10.2 Ecosystem-level Paradigm to Compensate for the Cost of Entity Profiting .....	346

10.3 The Objective-fulfilling Super-Primordial Doctrinal Paradigm Is the Divine Plan of Mother Earth.....	347
10.3.1 First, “I am the Northeast Direction Doctrine” ( <i>Varnasamamnaya siddhanta</i> , 846) .....	347
10.3.2 Second, “I am the Southeast Direction Doctrine” ( <i>Sumamkasa Mahayuga</i> , 375).....	350
10.3.3 Third, “I am the North Direction Doctrine” ( <i>Uttar amnaya siddhanta</i> , 169). .....	351
10.3.4 Fourth, “I am the South Direction Doctrine” ( <i>Dakshin amnaya siddhanta</i> , 195) .....	352
10.3.5 Fifth, “I am the West Direction Doctrine” ( <i>Paschim amnaya siddhanta</i> , 164). .....	354
10.3.6 Sixth, “I am the East Direction Doctrine” ( <i>Purv amnaya siddhanta</i> , 170). .....	357

**Chapter 11: Dynamic Growth of the Paradigmatic Planning..... 359**

11.1 A Six-Phase Doctrine-Free Paradigm Is the Divine Plan of the Cosmic Perpetuator.....	361
11.2 First, the Localization Phase .....	361
11.3 Second, the Retention Phase.....	362
11.4 Third, the Concentration Phase .....	363
11.5 Fourth, the Memorization Phase.....	364
11.6 Fifth, the Reproduction Phase .....	365
11.7 Sixth, the Global Exchange Phase .....	366

**Chapter 12: Technological Value of the Paradigmatic Planning..... 373**

12.1 The Organization as the Present Reality .....	375
12.2 The Possibility Immanent within the Ecosystem as the Normative Organization.....	376

12.3 The Potentiation of the Ecosystem Potential of an Organization	377
12.4 The Present Followership Reality of a Formative Organization...	379
12.5 Limitations of the Followership Mindset.....	380
12.6 Limitations of the Leadership Mindset .....	381
12.7 Limitations of the Entrepreneurship Mindset.....	382
12.8 Necessity for the Management Mindset.....	384
<b>Chapter 13: Organizational Development of the Paradigmatic Planning</b> .....	<b>398</b>
13.1 The Power of Managing the Limits of Science.....	400
13.2 Organizational Development of Sentient Energy .....	405
13.3 Paradigmatic Planning of Consciousness, Without Investment Power.....	406
<b>Chapter 14: Paradigmatic Planning Within an Organization.....</b>	<b>415</b>
14.1 The Guider-Effect of the God-like Perpetuator .....	417
14.2 Techniques for Evaluating the Guider-Effect of a Perpetuator.....	419
14.3 Is the Guider-Effect = $e$ ? Understanding and Transcending the Special Theory of Relativity.....	423
14.4 Is the Future Value = Present Value? Understanding and Transcending the General Theory of Relativity .....	424
14.5 Is the Value of the Perpetuator Constant and Absolute?.....	426
<b>Chapter 15: Paradigmatic Planning Without an Organization.....</b>	<b>435</b>
15.1 Understanding the Perpetuating Present Reality.....	437
15.2 The Absolute and Constant Value of the Perpetuating Present Reality .....	438
15.3 The Variable Value of the Perpetuating Present Reality.....	446



15.3 The Variable Value of the Perpetuating Present Reality.....	446
<b>Chapter 16: The Organization as the Divine Paradigmatic Plan.....</b>	<b>453</b>
16.1 Understanding the Divine Paradigmatic Plan .....	457
16.2 Two Causal Bodies of the One Divinity.....	459
16.2.1 The Self as the Causal Body of the Variable Divinity .....	460
16.2.2 The Self-luminous Entity Is the Causal Body of Absolute and Constant Divinity.....	461
<b>Chapter 17: The Ecosystem As the Guider Paradigmatic Plan.....</b>	<b>472</b>
17.1 Understanding the Guider Paradigmatic Plan.....	475
17.2 Why Friendly Paternal Personal Force Becomes Undesirable? ....	476
17.3 The Present Reality of the Varying Forms of Divinity.....	479
17.4 The Present Reality of the Absolute and Constant Divinity.....	481
17.5 The Present Reality of the Primordial and Variable Divinity .....	483
<b>Chapter 18: Conclusions—The Entity as the Sentient Paradigmatic Plan .....</b>	<b>488</b>
18.1 Understanding the Sentient Paradigmatic Plan.....	491
18.2 The Present Reality Is the Science of Everything.....	495
18.3 The Potential Reality is Everybody Beyond Science.....	497
18.4 The Dynamic Reality is the Body, Within the Scientist .....	500
18.5 The Technological Reality is the Scientist, Without the Body.....	502
18.6 The Organizational Reality is the Self, Within and Without the Scientist.....	503
18.7 The Ecosystem Reality is the Mother Nature, Within and Without the Self.....	503
18.8 The Entity Reality is the Person as a Wholesome Entity .....	507

18.9 The Para Entity Reality is the Illuminator Deity as a Wholesomewhole Entity.....	509
18.10 Almighty Reality is the Primordial Greeter as an Entropy Entity .....	512
18.11 Almighty-Almighty Reality is the Primordial Greeter, Without Entity Consciousness .....	516
18.12 The Secret of the Almighty Creation.....	518
18.13 The Secret of the Almighty Creature.....	522
18.14 The Secret of the Almighty Creator.....	523
18.15 The Secret of the Present Reality.....	526
18.16 Is Present a Reality?.....	528
<b>Acknowledgments .....</b>	<b>531</b>
<b>Index: English.....</b>	<b>533</b>
<b>Index: Hindi .....</b>	<b>547</b>

## Project Motivation

### *Discovering the Vastly Integrated Processes Inside Nature*

The present project is about discovering the vastly integrated processes inside nature that shape our divine reality as an entity and are shaped by our gravitating reality. With the advent of modern science, the knowledge of our ancestors got relegated to the background. Modern science has led to extreme differentiation and specialization of knowledge. Each field of knowledge has become disjointed from the other fields. The scholars of each field believe that their knowledge is the key to universal well-being and deserves special recognition. In the past, there were no boundaries between different knowledge domains. There was a seamless consciousness about the divinity, the spirituality, the natural dynamics, the supernatural motivations, interventions, and moderations, the devil manipulations and mediations, and the satanic subversions and massifying infections. There was a consciousness that each sentient entity has divinity and the potential to transform that divinity into divine energy and oneself into a mind-born grandmaternal spirit to eternally guide other entities' divinity.

Over time, people's consciousness shifted to focus on spirituality, seeking to bind the divine entities' spirit essence and transform them into maternal *jinnns*. They elevated themselves into a paternal *jinn*, who has the power to be at the command of anybody who knows the mantra for waking him from his peaceful slumber. By presenting themselves as an entrepreneur, wishing to serve the command of any master who believed in their power, the paternal *jinnns* transformed each entity into a *devil*. A *devil* is one who goes with the flow of the universe and becomes an invisible hand servicing that flow, as if it is his gift to the universe. Consequently, each entity became a devotee of the different elements within Mother Nature. People began deifying each natural element as well as the diverse forms of those elements, seeking to charm them with the science of *tantra*.

People did not know that when one deifies an inanimate natural element, one is essentially servicing a unit of one's divine energy to let the entire universe benefit from that energy unit. It makes one the soul of the universe of follower entities. Without consciousness of the truth of the

worshipped deity's divinity, the followers conceive the deity as the son and the soul as the perpetuating God of the deity's illusionary energy. By personifying the blessed natural element, they transform that natural element into an absolute soul, i.e., a soul present within them in the form of the energy they activate whenever they perceive a void in their consciousness. Both the soul and the absolute soul become key to their conceived conscious well-being.

By believing in a para deity's supernatural powers to fulfill any wishes one has, one naturally transforms into a deity, blessed by that para deity. By behaving like a deity, one gets a rude shock when the proliferating aspirations of the leader person and the para-person universe of the followers do not get fulfilled. Consequently, each person becomes a discordant factor, seeking to motivate everybody else to see the value of its wishes and work toward fulfilling those wishes, as a path for realizing the truth of the deity and, through that, of the para deity. When one works toward fulfilling those wishes, as a sentient entity, one becomes a param deity, capable of fulfilling any wish of any entity in the universe.

There are two pathways to be a param deity. First, make one's workforce proficient to fulfill any wish by spontaneously becoming the wishable wish that trumps the entire universe of wishes. If everybody wishes to be like you, then you are the param deity who needs to do nothing but enjoy the benefit of devotion and absolute surrender by each entity. Second, make one's network proficient to fulfill any wish by spontaneously breeding that wishing within the entire universe of entities so that each entity becomes devoted to fulfilling a part of that wish effortlessly using a proportion of their natural energy. In this case, each entity becomes a primeval deity, capable of fulfilling an infinity of wishes by leveraging the tertiary residual formed by everybody else in the universe.

The networking pathway is a pathway of action that requires one first to be a supreme, creator deity for manifesting the rest of the universe as a supra, manifestor deity, reproducing and multiplying itself to form the entire universe as a super, knower deity. This divided entity is both conceiving and fulfilling its wishes by itself. Suppose one decides to devote consciousness into the act of creation. In that case, one eventually destroys oneself and becomes a part of the universe, conceiving a solution as well as experiencing the truth of that solution.

The workforce pathway is a pathway of knowing that requires one first to be a primordial, natural deity for liberating each entity to be what one is, effortlessly, without the mediation of any gravitational energy in the form of the guider power of a guider (guru) element.

There are two pathways for exchanging what each person in the universe wishes to do with what must be done to fill their consciousness void so that they make you their wishable wish. First, exchange the consciousness of each person with yours and become each person's para-consciousness. It makes each person your homolog but does not activate a self-luminous consciousness to be like you, but not your programmed robotic reproduction. Second, exchange each person's consciousness with that of Mother Nature and let each person develop a self-consciousness of the futility of depending on a naturally cyclical para-conscious element, whose behavioral qualities are befitting an inanimate entity, but not an animate entity.

Your personal force is the pathway of devotion that requires one first to be a devoted, supernatural deity, perpetuating oneself as the goal of all social exchanges.

Mother Nature's social force is the pathway of divinity that requires one first to be a devotee deity, illuminating oneself as the centering element. One discovers the centering element after piercing through the blinding, diffused, circulating air, generated because of the natural cycle of birth, growth, death, rest, and rejuvenation.

Now, you, as a person managing your life, have a choice. You can be like a person you believe is a param deity and make the entire truth of that person your goal. Or, you can be like Mother Nature and make experiencing the entire beauty of her as a para-person your paradigm for knowing the truth of the present reality.

Alternatively, you can be who you are and devote your energy to channel your consciousness on being who you are.

The titles of the twelve books in this project are as follows.

- What is divine energy
- What is present reality
- Is present reality
- Is divine energy
- What is consciousness
- What is para-consciousness
- What is self-awareness
- What is human factor
- What is trading factor
- What is cultural factor
- What is exchange factor
- What is technological growth

The first book, *What is divine energy*, introduced the essential vocabulary for knowing life's truth and illuminated its homologous constructs and analogies, both from the diverse disciplines of modern science and India's ancient wisdom dispersed across numerous manuscripts. It took a causal, sequential, and consequential approach, highlighting the chronological sequence of a cell's thirty-three phase development.

This second book, *What is present reality*, challenges the classical determinism, neoclassical thermodynamism, modern probabilistic relativism, as well as post-modern quantum indeterminism notions of knowing the present reality. It examines the diverse doctrines for the paradigmatic planning of the future reality. Each entity puts a varying proportionate priority on the varying doctrines to form a varying notion of the present reality. However, the present reality is neither the general notion about what it is nor the specific notion of what it is not.

As a general notion, the present reality is a sum of the specific past realities conceived at varying time moments. It is historical, knowable, and therefore, deterministic. As a specific notion the present reality is the

generalized value of the varying future realities that may manifest with what one conceives in the present moment. It is conditioned by the cultural knowledge and, therefore, is a weighted average of the varying cultural linkages the conceiving entity has at the present moment.

Without knowing the truth of the varying cultural linkages within the conceiving entity, one may use the numbers for a probability prediction of the targeted present reality. Without knowing the truth of the dynamic cultural exchanges without the conceiving entity, one may find errors in those numbers and perceive the present reality to be indeterministic. An imperfect knower has zero integrity as a scientist and needs to be falsified before one diffuses imperfect knowing as a scientific discovery and pollutes everybody's consciousness.

Overall, as a management professor, my goal is to offer an overall strategic awareness of the reality within and without us, and offer solutions to manage our lives meaningfully in the present moment and leave a positive, healthy legacy for the sentient well-being of the future generation of children.

**Since the science and the cultural wisdom, as we know, are the works of imperfect knowers, for knowing the present reality one needs to discard all received wisdom.** If you are up for that challenge, then I welcome you to join the journey now. If that seems daunting, then do not worry. Wait for the other books in this project that will offer a more accessible exposition.

**If you do not wish to wait, you may use the index to identify themes that are of particular interest to you and use this book as a guide to formulate an alternative hypothesis to explain what you believe you know,** based on what either the modern science teaches you or the books you have read about the cultural wisdom of India. Take that hypothesis to its logical conclusion by reexamining the evidence using a fresh mind, free from a blind faith on what you thought you knew. Please contact me at my personal email [gupta05@gmail.com](mailto:gupta05@gmail.com) and share what you find. ***I guarantee a life full of fresh discoveries, once you take the first step.***

## List of Abbreviations

DIVINE	d = determination, I = imagination, v = virtue, I = intuition, n = natural, e = excellence
GUIDER	g = global, u = unique, i = inclusive, d = diverse, e = engagement, r = responsibility
SHEENY	s = social, h = human, e = ecological, e = economic, n = national, y = psychological



## List of Tables

Table 1. The Seven Secondary Forms of the Formative Paradigm of Organizational Planning .....	66
Table 2. The Eight Tertiary Organizational Development Strategies for Transformative Planning .....	81
Table 3. The Metaphysical Frequencies of the Denary of Colors .....	103
Table 4. Eighteen Kingdoms (Edens) and Thirty-Six Energy Realms (Starseed Universes) of Divine Entities.....	119
Table 5. Twenty “Primordial Realms” (Maha Kalpa) and One “Primordial-Primordial Realm” (Antara Kalpa) in the Universe .....	141
Table 6. The Ten Digits of Natural Elemental Qualities Within the Primeval Entity Realm of the Universe.....	145
Table 7. The Eight Digits of Supernatural Elemental Qualities Within the Param Entity Realm of the Universe .....	148
Table 8. The Six Words of Divine Elemental Qualities Within the Primordial Entity Realm of the Universe.....	152
Table 9. The Sixteen Words of Guider Elemental Qualities Within the Para Entity Realm of the Universe.....	157
Table 10. The Sixty Time-Varying Pathways for Oneness of the Absolute Creature with the Primordial-Primordial Realm.....	164
Table 11. The Four Pathways of Primordial Deity, Without the Primordial Perpetuator.....	176
Table 12. The Sixteen Pathways of Primordial Greeter, Within the Primordial Perpetuator .....	180
Table 13. The Four Pathways of Primordial-Primordial Creator, Without the Primordial Greeter.....	189
Table 14. The Sixteen Pathways of Param Child, Within the Para Deity.	190

Table 15. The Fourteen Pathways of the Luminous, Without the Self-luminous Entity.....	223
Table 16. The Fourteen Pathways of the Self-luminous Entity, Without the Luminous.....	228
Table 17. The Fourteen Pathways of the Self-conscious Entity, Within the Self-luminous Entity.....	235
Table 18. The Twelve Pathways of the Param Child, Within the Maternal Self-luminous Entity .....	327
Table 19. The Twelve Pathways of the Param Child, Within the Paternal Self-luminous Entity .....	329
Table 20. The Twelve Pathways of the Param Child, Within the Feminine Self-luminous Entity .....	331
Table 21. The Twelve Pathways of the Param Child, Within the Masculine Self-luminous Entity .....	333
Table 22. The Ten Pathways of the Param Illuminator, Without the Masculine Self-luminous Entity .....	363
Table 23. The Seventeen Pathways of the ONE as the Param Deity, Without Being One.....	382
Table 24. The Sixteen Pathways for an Inanimate INFINITE to Become the SENTIENT COUNCIL OF ONE—THE ILLUMINATOR DEITY .....	405
Table 25. The Twelve Pathways for the Conceived FINITE to Become the Perceived INFINITE COUNCIL, within the Zodiac Spirit.....	424
Table 26. The Eleven Pathways for the Light to Become Sentient Light Force, Within the Primordial Realm .....	440
Table 27. The Eight Pathways for the Immanent Light Force to Become the Emanating Force .....	457

## About the Author

Vipin Gupta, Ph.D., is a professor of management, and co-director of the Center for Global Management at the Jack H. Brown College of Business and Public Administration, California State University, San Bernardino. He has a Ph.D. from the Wharton School of the University of Pennsylvania. He has been a gold medalist for outstanding academic performance in the Indian Institute of Management post-graduate program, Ahmedabad; a top rank holder in the B.Com. (Hons) Program of Delhi University from Sri Ram College of Commerce; and an all-India rank holder at the graduate program of the Institute of Cost and Works Accountants of India.

Vipin Gupta was previously at Simmons University, Boston, Grand Valley State University, and Fordham University. He has offered several training programs and workshops on strategic planning and cross-cultural management to senior executives, administrators, defense personnel, and research methods to doctoral students and faculty in India and the US. He has been a visiting or guest faculty at more than thirty business schools in India. His workshops and lectures have been covered by several of the leading national and regional newspapers and television channels.

Professor Gupta has authored more than 180 journal articles and book chapters, including in leading journals such as *Journal of Business Venturing*, *Family Business Review*, *Research in Organizational Behavior*, *Asia-Pacific Journal of Management*, *Multinational Business Review*, *Journal of World Business*, *Advances in Global Leadership*, and *Management Review*. Besides delivering lectures and keynotes in several nations, he has presented at international academic conferences in more than sixty nations, including the Academy of Management, IFSAM, EGOS, Society of Industrial Organization Psychologists, Global Entrepreneurship Conference, and Family Enterprise Research Conference. He has been on the governing board and organizing committee of several international conferences. In 2017, he served as the academic program chair for the 52nd CLADEA Assembly.

Dr. Gupta is the co-editor of the seminal GLOBE (Global Leadership and Organizational Behavior Effectiveness Program) book *Culture, Leadership, and Organizations – The GLOBE Study of 62 Societies* (Sage

Publications, 2004). He is the principal investigator of the path-breaking CASE (Culturally-sensitive Assessment Systems and Education) Project on family businesses. He edited two critically acclaimed books on the theme of strategic management, performance, and leadership in the emerging markets: *Creating Performing Organizations* (Sage Publications, 2003) and *Transformative Organizations* (Sage Publications, 2004). He is the author of the *Strategic Management and Business Policy: Concepts and Applications* (PHI Learning, 2003 and 2005). He has been the principal editor of ten books on family business models in ten different regional clusters and the eleventh book on family businesses' gender dimension (ICFAI University Press, 2004). He has also co-authored a research manuscript *MNC Subsidiaries in China: An empirical study of growth and development strategy* (Information Age Publishing; 2015), and a textbook *Leadership Across the Globe* (Routledge USA, 2015).

Vipin Gupta has been a recipient of the coveted 2005 Scott Myers Award for Applied Research in the Workplace from Society for Industrial Organization Psychologists, USA. As a 2015-16 American Council of Education fellow, he visited sixty-two universities, colleges, and higher education institutions in nine European nations, the USA, and India.

## Preface

As a preface to this work, here are some threshold concepts you will need for making sense of what you are about to experience.

### 1. Four Dimensions of the Reality

- The primordial (literally, finite: first formed with proportional, formative characteristics) reality is a beautiful, complex reality. It is a reality without the effects of the primordial entity.
- The primeval (literally, infinite: inclusive of the first age's transformative characteristics) reality is the true reality. It is a reality inclusive of the effects of the primordial entity.
- The present (literally, param: absolute with the normative characteristics) reality is the cause of both beautiful and true realities. It is the reality of the primordial entity as the creator of effects.
- The primordial entity is the primordial-primordial (literally, metaphysical: omnipresent within or without the infinite physical forms) reality. It is the creator of the primordial reality.

### 2. Four Additional Dimensions of the Reality

- Immanent reality is the experienced reality of divinity within the consciousness of an entity as a subject.
- Ideal reality is the reality of divinity of a subject who is the creator of the desired object.
- Emanating reality is the experienced reality of divinity without the consciousness of the entity who has created that reality.
- Theoretical reality is the reality of divinity scripted by a subject who perceives the desired reality as the gift of a para deity (literally, God: one omnipotent deity beyond the self's consciousness).

### 3. Four Dimensions of the Entity

- The primordial-primordial entity is a sentient (SHEENY) entity who, as a creature free from paradigmatic limitations, sentiates the desired social, human, ecological, economic, national, and psychological values.
- The primordial entity is a guider (*guru*) entity who, as a creator of a new paradigm, sentiates the desired global, unique, inclusive, diverse, engaged, and responsible values and modifies the desirability of the SHEENY values.
- The present entity is a divine entity who, as a creation of the present paradigm, sentiates the desired determination, imagination, virtue, intuition, nature, and excellence values, constrained by the socially desirable guider values and the institutionally desirable SHEENY values.
- The primeval entity is a Satan entity who, as an Almighty Creation of the constrained organizational development, destroys the desirable desired reality of the creation, the creature, and the creator, wishing to be an Almighty Creature who is the primordial paradigm shaping the present reality of the Almighty Creator.

### 4. Four Additional Dimensions of the Entity

- The subjective consciousness shapes an entity as the subject of the consciousness into a super deity who knows the subjective cause of subjectivity.
- The objective consciousness shapes an entity as the object of the consciousness into a supra deity who manifests the objective cause of objectivity.
- The ideal-effect of idealizing the self as the subject worth subjective introspection shapes the self into a supreme deity who creates the self as the worthy subject.

- The theory-effect of theorizing the self, as the object worth objective extroversion, shapes the self into a para deity who perpetuates the universe as an unworthy object.

#### **5. Four Dimensions of Strategic Management**

- Each of us is a primeval deity. We have infinite power to destroy the self's present reality and perpetuate the self's desired future reality.
- Each of us has the potential to be a param deity. We have absolute power to illuminate the worth of the self's present reality and destroy undesirable qualities.
- Each of us limits our potential by making our self-worth dependent on a primordial deity. We waste an ascending proportion of our energy begging the primordial deity for blessings to let us be the supernatural paradigm governing the strategic management of the universal endowments.
- A primordial deity is anyone who proclaims to have omniscience about the secret of how to control Mother Nature for appropriating disproportionate SHEENY benefits. Such an entity enjoys instant guider benefits. All believers enjoy infinite divine costs. The entire universe enjoys infinite SHEENY costs.

#### **6. Four Additional Dimensions of Strategic Management**

- A devoted deity believes in the primordial deity's power and perpetuates the primordial costs by conceiving them as the primeval benefits.
- A devotee deity lets the devotees believe anything they wish, so that they may personally experience the infinite SHEENY costs of the culturally-bounded rationality.
- A universal deity illuminates the devotee deity's truth by making each devotee personally responsible for the infinite GUIDER costs of the culturally-bounded rationality.

- A unique deity experiences the universal deity's truth by making oneself personally responsible for the infinite DIVINE costs of the culturally-bounded rationality.

## **7. Four Dimensions of a Strategic Manager**

- A disproportionate sense of the intrinsic entity value transforms us into a luminous. The luminous is an eternal deity who radiates the intrinsic divine value as a subject to ascend and transform the extrinsic object value. As a luminous, we breed infinite cost-escalating material power, making the pollution of nature a grand problem for everybody.
- A disproportionate sense of the extrinsic subject value transforms us into a primeval illuminator. A primeval illuminator is a potential deity who trades the extrinsic guider value to descend and transform the intrinsic subject value. As a primeval illuminator, we believe the ecosystem has the infinite free machinery power to take our polluted nature (the grand problem) as an illuminated value to be shaped into an infinite free method power (the supernatural solution).
- A disproportionate sense of the intrinsic subject value and the extrinsic object value transforms us into a primeval greeter. A primeval greeter is a universal deity who transforms both the primordial reality of the intrinsic subject's absolute entropy and the extrinsic object's absolute growth into the present reality. The present reality is of the intrinsic guider's infinite growth and the intrinsic SHEENY's infinite entropy.
- A disproportionate growth in the intrinsic guider value transforms us into a primeval perpetuator (who is a dynamic deity) of the contaminated dynamic reality that descends our extrinsic SHEENY value by ascending the universe's complexity.

## **8. Four Additional Dimensions of a Strategic Manager**

- The absolute entropy of both the intrinsic and the extrinsic SHEENY value transforms us into a primordial greeter (who is a technological deity) of the purified technological reality that ascends our extrinsic



guider value by making our intrinsic guider power that purifying technology.

- The absolute entropy of the power-seeking intrinsic guider value transforms us into a primeval paternal (who is an organizational deity) of a universe of devoted children, motivated to discover new heuristics for ascending the collective guider value of the local soul essence community.
- The absolute entropy of the power-diffusing extrinsic guider value transforms us into a primordial maternal (who is an ecosystem deity) of a universe of devotee children, motivated to illuminate the escalating costs of the institutional collectivism by investing their intrinsic divine energy.
- The absolute entropy of the universe fraternizing divine entities empowers us to be a param child (who is an entity deity), absolutely free to script our destiny by countertrading the diffused extrinsic divine energy. We become a subject experiencing the extrinsic divinity and destroying the consciousness of our intrinsic divinity.

The objective of the present investigation is to help a strategic manager be a param manifestor (who is a present deity). It seeks to empower each child to transcend the limitations of the dependence on the extrinsic divinity and discover the present reality of the Vastly Integrated Processes Inside Nature. Discovering the truth of the present reality omnipermeating within Mother Nature is a joyful journey. No entity, discipline, culture, or religion has conditioned my journey. Many have guided my journey to be free from the limitations of the present reality. I acknowledge due credits at the end of this work. For now, at the outset, I wish to offer my profound gratitude to my wife, Bhakti, for her constant inspiration, critique, love, and suggestions for timely and audience-oriented investigations. Credit for the present investigation is shared equally between her and me. Her support has been quintessential for me to conceive, persevere, and finish the present investigation.

VIPIN GUPTA

# Chapter 1: Introduction – Understanding Present Reality

## The Three-Fold Divine-effect of One's Behavior System on the Reality

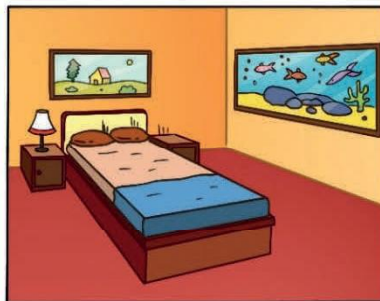
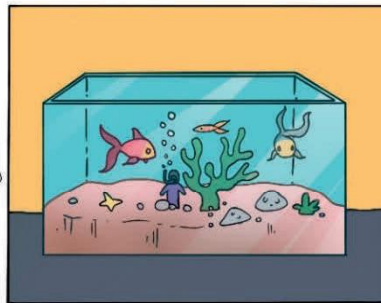


Simple Reality

The future reality planned by the divinity without an entity is a SIMPLE REALITY that perpetuates. It is natural.

The present reality performed by an entity becomes a VIRTUAL REALITY when reproduced. It supernaturally reproduces the natural reality as a foundation for the artificial "present growth."

It's virtual reality, artificially recreating the illusion of natural reality.



Augmented Reality

The past reality programmed within an entity becomes an AUGMENTED REALITY, using virtual elements as the artificial building blocks for supernaturally transforming the natural reality.

**The Present Reality is a Two-Dimensional Virtual Reality of a Deity and an Entity**

As a deity, an entity conceives a virtual mind-born future reality and materializes that as the present reality for everybody to enjoy. It is the absolute reality of the entity's devoted follower universe, rather than of the entity. An entity-scripted absolute reality supplements the omnipresent reality of the universe without the entity. The unscripted omnipresent reality has simplicity. The entity-scripted present reality generates complexity by consuming everybody's disproportionate energy for augmenting and discerning its value.

**1.1 The Scientific Approach to Present Reality**

Many scientists have investigated and discovered the diverse dimensions of the present reality. As an observing entity, each scientist observes a diverse present reality dimension by activating a diverse paradigm for observing. A paradigm is a system of methods for scripting, conceiving, perceiving, experiencing, sentiating, spiritualizing, materializing, reproducing, and exchanging the diverse proportionate dimensions of the present reality. One scripts a dimension of the present reality by taking it as an absolute value and consciously determining a path for transcending that absolute limit. For scripting a new reality that does not exist in the present moment, one conceives that new reality by opening the mental block-box and riding on the horse of imagination in a virtual reality dream world.

For conceiving the virtual reality as an ideal point of infinity, one perceives the diverse dimensions of the present reality, guided by the experiential value of each dimension, to sentiata a modified vision of the present reality. For instance, one may wish for a world without humans or animals, so that the plants can grow and thrive naturally, and the environment remains virgin and beautiful. One may also wish for a world where humans, animals, and plants contribute to each other's natural growth without any entity's dominance. For sentiating a modified vision, one spiritually develops an impulse to materialize the partial reality and

reproduce that as the absolute reality. Thus, the present reality is the exchange value of the absolute reality conceived by a primordial entity, i.e., an entity that lived in the past as the paternal of all the present entities and wished the “universe of child entities” to experience a part of the omnipresent reality.

The present reality, scripted and conceived by a primordial paternal, is perceived and experienced by the param child, i.e., the child who lives in the present, as the proportionate value of an omnipresent reality. By attuning their mind to the omnipresent reality, a param child enjoys the power to sentient an omnipotent reality that was destroyed by the primordial paternal. After observing the omnipresent reality, a primordial paternal reproduces its proportionate value in the form of the present reality. After observing that present reality, a scientist reproduces a its proportionate value to form the future reality. The universe of all entities scripts the future reality. The scripted reality becomes the universe's present reality. The collective script of the universe of entities permeates the reality that unfolds over time. Each entity punctuates it with an individual script forming the omnipotent reality.

The aggregate of a collective and several individual scripts is modified and polluted by each entity to form a proportionate omnipresent reality. The totality of the one aggregate, and many disaggregated, scripts is mediated and proliferated by each entity in the form of the varying present realities. Without any desirability value weights reflected in the proportionate dominance, the varying present realities' wholesome value forms the almighty creator reality. The “overall present reality,” i.e., the almighty creator reality and the varying future realities, scripted by each param child, forms the almighty creation reality. Again, the “overall future reality,” i.e., the almighty creation reality and the varying forms of future entities, form the almighty creature reality. It is the creature's reality as the creator of both: the inanimate creation (derived and integrated from the past moments) and the animate creation (differentiated in the present moment). The “overall past reality,” i.e., the almighty creature reality that is not yet manifested, together with the varying forms of past entities, is the absolute reality. It is the reality of the creator of both the departed child souls and the future child spirits.

The departed children's physical bodies are now present as the diverse materials, metals, minerals, plants, animals (inclusive of the birds, fishes,

*Chapter 1:*

and insects), and humans. The physical bodies of the present entities will be the medium for incarnating the future child spirits. The absolute reality comprises the relative, proportionate, and diverse realities of the present entities and the infinite, disproportionate, and inclusive realities of the future entities. The absolute reality is the unique and squared reality of the present universe of entities. The future universe of entities is the engaged, entangled, and circumambulating reality of the omnipotent entity who happens to be the absolute reality's creator. The past universe of entities is the responsible, disentangled, and parabolic reality of the omnipermeating entity. Its perpetuating head-domain is the ascending, emergent, entangling, and circular reality. Its illuminating tail-domain is the descending, divergent, disentangling, and squaring reality. The overall reality of the almighty creator comprises the six forms of realities:

- First, the global, square root reality of the omnipresent universe of entities is the whole, sentiated, and centroid absolute reality of the universe.
- Second, the unique, squared reality of the present universe of entities is the fractional, spiritual, and diagonal relative reality of the universe.
- Third, the inclusive, exponential reality of the future entities is the disproportionate, infinite, and vertical experiential reality of the universe.
- Fourth, the diverse, logarithmic reality of the present entities is the proportionate, finite, horizontal, simplistic, and perceptual reality of the universe. It exponentiates the present experience and forms its future.
- Fifth, the engaged, circulating reality of the future universe of entities is the definite, ascending, entangling, chaotic, and conceptual reality of the universe. It radiates from the omnipotent entity's mind and irradiates into the intellect of the omnipresent entity for conceiving the present entities in their physical form.
- Sixth, the responsible, squaring reality of the past universe of entities is the ground, descending, disentangling, complex, and scripted reality of the universe. It radiates in the form of a light force from an omnipermeating astral body. It irradiates into the almighty creator of the past entities' etheric body in their metaphysical, spiritual form.

The etheric body refers to the incarnational universe of entities that services the overall “guider” reality. It consists of the global, unique, inclusive, diverse, engaged, and responsible dimensions. It works like a force without the light of the causal body. The causal body is the divine cause transforming a self-luminous entity into an etheric body. A self-luminous entity generates the force for disintegrating a star into an incarnational universe of entities. The gravitational energy of the star is the overall guider power of the incarnational universe of entities. The gravitational energy is the energy programming a set of behaviors that repel the undesirable, past reality and attract the desirable, future reality. The incarnational universe of entities trades the gravitational effect in the form of the guider power for guiding a set of behaviors among the present entities through their differentiated physical bodies to manifest the desired, integrated guider reality.

A self-luminous entity is the para-primordial self of the universe of entities that forms a physical body. It forms the primordial self in the form of the divine energy that leads the universe to incubate each entity in the form of an astral body. The divine energy is radiated by the param self, a spiritual entity embodying the ideal, future reality. The self is free from both the self-conceived intellectual idealism that forms the spiritual entity and the self-perceived theory of mind that incarnates a universe of entities in the form of the etheric body. The universe of entities experiences the primordial paternal, who incarnates them by diffusing the light from his physical body, as a force oriented toward reunification with the formative maternal source of divine energy. The formative divine energy is radiated by a grandfather cell, whose present reality is the paternal soul and whose future reality is the child spiritual entity. The present entity is the physical body, whose actual reality is the self-luminous entity. It is originally a grandmother cell that services a fourth of her squared energy, sentiating the paternal soul while transforming herself into a three-dimensional self-luminous entity.

When one prays, “*may the soul of the departed entity rest in peace,*” one invokes the paternal soul that is wishing to trade the sentient energy of the self-luminous entity. On death, the self-luminous entity becomes a physical body. Since the paternal soul is unable to trade the child entity's sentient energy after her death, he seeks to find an alternative grandmother cell to

*Chapter 1:*

perpetuate his guider power to guide a sentient entity. The perpetuating guider-effect of the paternal soul limits the power of the atoms—that once constituted the departed physical body—to reunify with a self-luminous astral body. The atoms become entangled with the present sentient entity's physical body, mediated by the present reality of the paternal soul. The paternal soul is immanent within the etheric body, comprising many paternal souls, as a guiding force.

A sentient entity may cleanse the physical body from the guider programming-effect of the present paternal soul and the infinite additional souls from the past which constitute the etheric body. By doing so, the sentient entity empowers the normative development of the self-luminous astral bodies and their transformative growth into the universe of sentient entities. Such cleansing sentient entities, which manifest the self-luminous astral body, become luminous. A luminous is one who radiates the light force for the technological growth of the universe of entities. By trading the luminous astral energy, immanent within the astral body, an inanimate, material entity transforms into an animate, sentient entity. By trading the astral energy of a feminine maternal entity, immanent within a masculine grandfather entity, an androgynous, inanimate child entity incarnates a para-androgynous universe of the sentient granddaughter and grandson cells. The inanimate child entity becomes a present living child, and then a parent for incubating the infinite cells.

Depending on the method for making sense of the present reality's causative sequence, one may consider any animate or inanimate forms of the self as an entity. One may also consider one's divinity for conceiving the infinite ideal para-entity forms by scripting a theory of the mind that imagines the self in those diverse entity forms. By activating the diverse methods, one forms a paradigm for managing the present reality without the limits of specifically varying, mutually-exclusive theories; a generalized constant, all-inclusive ideal; and sequentially-formed, quantum hypotheses, for falsifying the truth of a diverse two-dimensional theory of relativity.

Albert Einstein's special theory of linear and continuous relativity is an all-inclusive perspective on the diverse mutually-exclusive theories about the present reality. His general theory of nonlinear and disentangled relativity is a mutually-exclusive perspective on the all-inclusive ideal value of the present reality. His sequential acceptance of the entangled relativity's

quantum theory is a self-excluding perspective on the present reality's hypothetical and theoretical value.

## 1.2 The Special Theory of Linear Relativity

The theory of continuous linear relativity is special and all-inclusive of the diverse theories of mind. Each theory of mind radiates the formative astral body's light as a special form of the general self. The etheric body is a continuous linear reality of the universe formed by irradiating the diverse special effects to norm the general self organizationally. That general self is the universe as an entity. A causal body may trade the continuous linear reality of the universe and service that as the nonlinear, discontinuous reality of the special self. That special self is the causative entity, perceiving the universe's linear reality as a grand challenge and conceiving a solution for transforming the self into a special divine entity. It believes in the self's special power to experience the self-luminous reality of the universe.

By spiritualizing an “I AM a Deity consciousness,” the causative entity becomes the Luminous. The Luminous is the guiding force, causing each self-luminous entity to trade the entropy-perpetuating reality of the universe. The continuous value of the relative reality of the universe is the entropy value of the universe. When a universe becomes an “electromagnetic mass” ( $m$ ) that is radiating and irradiating “energy” ( $e$ ) for forming the diverse entity forms of “self” ( $c$ ), the consequential energy value of the universe as a future ideal primeval entity is zero. It is the entropy diffusion value of the universe. Therefore,  $e = mc^2 = 0$ . It is the general energy value of the special theory of relativity. The entity, who is sentiating the deity consciousness, fails to quantify this theory-effect of the self. The failure accounts for the transubstantiation of the entity's nonlinear growth with the linear entropy reality of the universe.

A deity diffuses the intrinsic self-luminous entity light with a force that generates an entropy of the deity consciousness and services the unit value of a deity as the alternative and illusionary energy value of the universe. Therefore, the entity, who becomes the primordial paternal of a new illusionary reality, perceives  $e = mc^2 = 1$ . In other words, the entity believes that the special theory of relativity quantifies the aggregate value of the energy in the universe without consciousness that the aggregated universal



*Chapter 1:*

energy experienced by the entity is the energy of the self. The self is the entity catalyzing the incremental growth in the universe of entities, otherwise paralyzed without knowing the illusionary truth. The self then believes the incremental growth to be the emanating value of the energy in the universe, serviced by a para deity. It conceives that para deity to be the invisible creator God of illusion, hiding the truth from the non-believers.

The diffusion of the illusionary truth is the path for the divine self to convert each non-believer into a believer of the primordial deity's truth. That primordial deity is Mother Nature, who is conceived by Albert Einstein as Yahweh; perceived by the universe of entities as Tetragrammaton; and experienced by the universe as an entity in the form of the four-lettered reality: YHWH.

The letter Y symbolizes transforming a logarithmic root reality of the universe into an exponentiated infinite reality of an ideal point entity, creating a nonlinear, curvilinear and, parallel reality scripted by that ideal entity's divergent divine point. It is the reality of the causative body generating the nonlinear reality. The letter H symbolizes bridging the diagonal that connects the linear and the nonlinear realities. The first bridging diagonal is the universe of entities trading the nonlinear reality as a passive observer of the manifested gravitational force. As an active reproducer of the guider-effect, the universe of entities services that nonlinear reality in the form of a linear, primeval perpetuating reality.

The letter W symbolizes the entanglement of the two sets of curvilinear realities. First, the primordial paternal's curvilinear reality as an ideal creator of the polluted, exponentiated present reality of the truth. Second, the primeval paternal's curvilinear reality as the ideal perpetuator of the proliferating, exponentiated future reality of the truth. The entanglement ascends the primordial paternal to be God. God descends divine blessings for transforming each devoted follower, who perpetuates the myth of the Godhead into a deity.

A deity is worth following as a matter of faith by any devotee of the contaminated modern science. No referee will ever question any scholar who invokes the reference of the Godhead for scripting a transformed reality of Mother Nature. By taking this additional step, a deity-like scholar becomes the primordial deity who binds the reality of Mother Nature with him as the supernatural paradigm of the present reality. The second

bridging diagonal (the second letter H) is the entity that trades the Godhead-effect without verifying the truth of the curvilinear reality. The entity then services a new paradigm of the present reality as the new absolute to bind all children who wish to be credentialed as a scientist.

This investigation falsifies the supernatural truth of both: first, the primeval deity who is destroying the Godhead-effect and, second, God who has become the Godhead after servicing the “I AM a Deity consciousness” to the primeval deity. Therefore, it is self-evident that the present investigator is not a natural scientist and the present investigation is not a work of natural science. Since this investigation illuminates the natural truth hidden from the universe of deities, it is self-evident that the present investigator is a management scientist who is conscious of how to discriminate the truth from the falsehood without a fear of the social power consequences. A management scientist is guided by a vision to illuminate the power distance that is contaminating the virgin integrity of Mother Nature. The mission is to empower each child to become a metaphysicist, endowed with the power to enjoy the independence from both the mentally-conceived God and the intellectually-reproduced Godhead-effect.

### **1.3 The General Theory of Nonlinear Relativity**

The theory of nonlinear discontinuous relativity is general and mutually-exclusive of the diverse specific entities that trade and embody the special Godhead-effect. A general, nonlinear God of modern science radiates the etheric body's force as a discontinuous form of the universe. God creates a discontinuous universe of faithful believers who are his devoted followers within the primordial universe of entities. Each special primeval deity irradiates God's ascending Godhead value, without the descending the Devil value that symbolizes the entropy reality of the myth of the perpetuating Godhead-effect.

The perpetuating Godhead-effect culturally binds the rationality of an infinite number of idealized follower entities and transforms each into a primeval deity. The primeval deity trades the energy of the mass of the devoted entities for destroying the freedom of the devotees, conscious of the

*Chapter 1:*

truth of Mother Nature. The “perpetuating, thermodynamic mass” (M) becomes the institutional force, whose immanent energy value derives from the referential, squaring reality of “God” (C).

Without God, the “energy” (E) value of the perpetuating mass is zero, i.e., the entropy absorption value of each para entity trading the polluted para-consciousness diffused by God as an entity. Therefore,  $E = MC^2 = 0$ . It is the special energy value of the general theory of relativity.

Each para entity fails to quantify Einstein's ideal-effect because their mind is also a product of the polluted present reality. Einstein was trading the Western religion-effect for conceiving a God whose emanating creator energy is immanent within the creation mass and is exchanged back and forth by the universe of creatures at a lightning speed. The exchange between the inanimate mass and the animate universe occurs at a lightning speed. Therefore, the speed of light has the same metric value as the one who is diffusing the self-luminous entity energy and trading the divine energy of the primordial illuminator.

Consequently, the traded divine energy becomes the logarithmic base for the exponentiation of the entity's intrinsic divine energy by diffusing the self-luminous consciousness. The exponentiated divine energy transforms into the gravitational energy of the departed entity. The triangulated divine energy of the universe of entities trading the departed entity's guider-effect becomes the parabolic sentient energy. The sentient energy is the consciousness of the energy that is present without an entity. It is the truth of anybody who is a devotee of the Western culture-effect.

The Earth's Western geography trades the Sun's derived reality since the rising Sun is toward the East of the Earth. Therefore, an entity within the Western geography always has a consciousness of the Eastward source of energy. Such consciousness generated a historical proclivity in the West to migrate Eastward toward Central and Southern Asia and, in the East, to migrate Eastward toward the Americas. Western geography is not a naturally scripted spatial fact. It is a conceived temporal fact. There is no logical reason why people in the Western hemisphere perceive themselves as living away from the Sun—the param creator of life.

Those in the Eastern hemisphere experience a strong force of the proximity to the Sun. As a result, a discontinuous consciousness of the Earth's continuous space, which wholly faces the Sun in the East, is

disproportionately traded by those living in the West. That's why the West is guided by a monotheistic belief in the truth of one God, seeking to convert others' consciousness away from the reality of the Sun as the absolute creator of infinite divine entities and forces.

Since this investigation illuminates the truth of the Western-effect and the culturally-bound rationality for reproducing and triangulating the Western-effect, it is free from the Western culture-effect. However, as is self-evident, the Western-effect itself is a mind-born construct. For cleansing the predominating mass of the Western-effect, anybody may quantize and trade the Eastern cultural system. A supreme deity, who enjoys a supreme consciousness of the true reality in oneness with the Sun's astral body, may manifest many supra deities. Each supra deity enjoys a supra consciousness of the actual reality for transcending the knowable shadow limit of the consciousness polluted by the Self's discordant, secret, and Satanic reality.

#### **1.4 The Parabolic Theory of Chaotic Relativity**

The circulating, chaotic, relativity theory is parabolic and excludes the self's value as the quantum digit. The circulating value of the present reality generates chaos in the mind of each entity. Each entity becomes just a quantum digit, perpetuating and squaring the tail-domain of the circulating circular head-domain. Suppose the discordant, Satanic energy of an entity is the metric of the squared myth. In that case, the circulating self of that entity doubles the perpetuating linear negative metric value of the squared myth. By excluding the self's value as the quantum digit that norms the negative discordant energy, the theory's value, grounded in the diverse forms of relativity, becomes zero.

The self is the absolute digit necessary for verifying the relative truth of any theory that is seeking to explain the absolute truth of Mother Nature. A natural scientist hypothesizes the theoretical value of the self to be zero. A natural scientist also believes that the self has a zero-effect on the objectivity of the discovered value of Mother Nature. By appreciating the zero-effect of the self on the universe's truth, a natural scientist falsifies the self's value as a contaminating physical body. A social scientist is conscious that anything a natural scientist discovers is subject to eventual falsification.